

# PRODUCT SETUP FACT SHEET



## WHAT IS BLEED?

When designing for print it is important to remember that it can be difficult to trim a job right on the edge of a design. In order to achieve the best result possible, you will need to extend your design past the trim lines, so the design can easily be cut down to size. The area that extends past your trim lines is called 'bleed'. In order to get the best results when designing for print, it's important to ensure your artwork always extends past the trim lines.



## BROCHURE

440x210mm

### GENERIC FACTS:

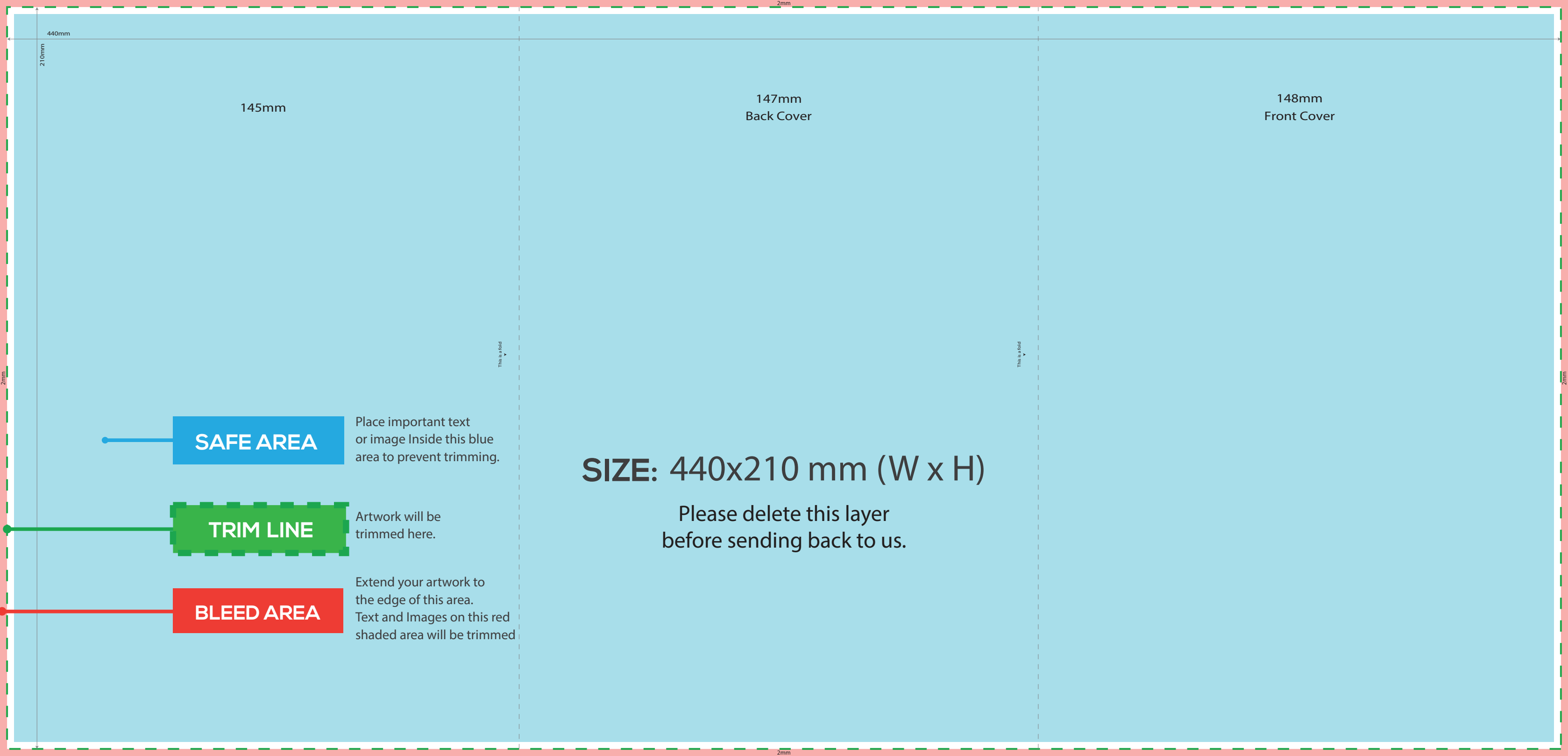
- Convert all text to outlines
- 3mm bleed requirement
- File provided in CMYK only
- Our recommended rich black break down in 40%C, 40%M, 40%Y, and 100%K
- Supplied as press ready PDF

### IMPORTANT DESIGN NOTES:

- As per industry standard colours may vary up to 5%
- For the best colour accuracy please refer to a Pantone colour guide and not your screen.

### PRODUCT SPECIFICS:

- Artwork size: 440mm x 210mm (WxH)
- Total size with bleed: 446mm x 216mm (WxH)
- Use of vector image recommended
- 3mm bleed requirement



440mm

210mm

145mm

147mm  
Back Cover

148mm  
Front Cover

**SAFE AREA**

Place important text or image inside this blue area to prevent trimming.

**TRIM LINE**

Artwork will be trimmed here.

**BLEED AREA**

Extend your artwork to the edge of this area. Text and images on this red shaded area will be trimmed.

**SIZE: 440x210 mm (W x H)**

Please delete this layer before sending back to us.

This is a fold

This is a fold

2mm

2mm

